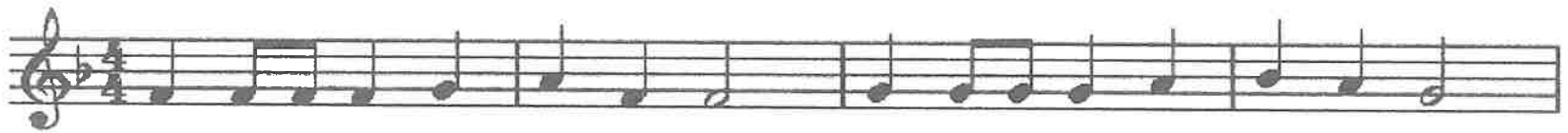
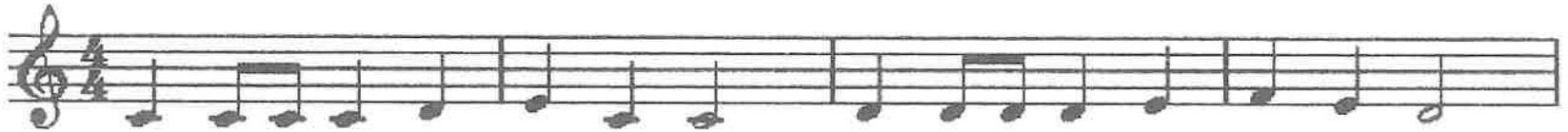


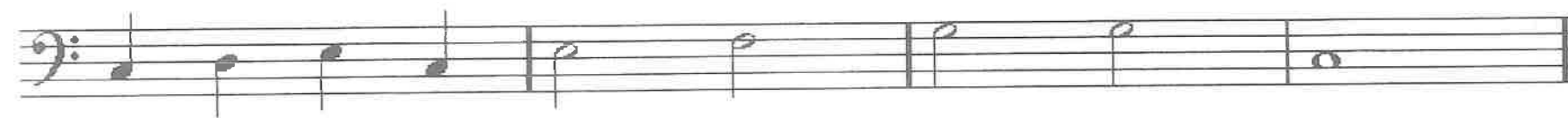
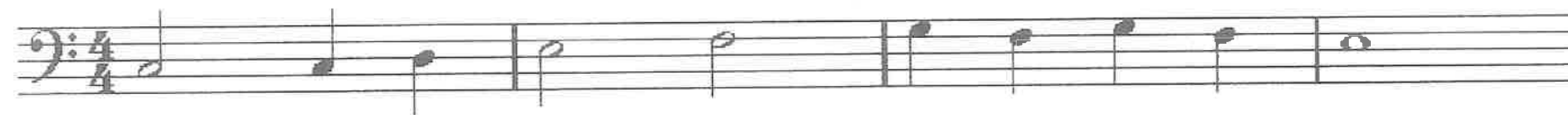
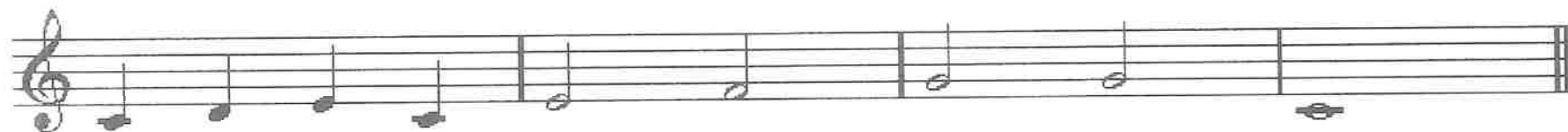
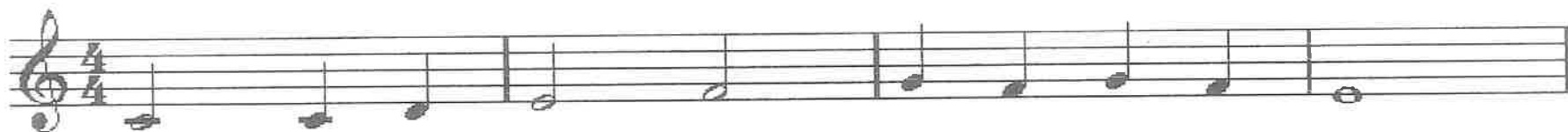


2008 NC Middle School Honors Chorus  
Sight-Singing



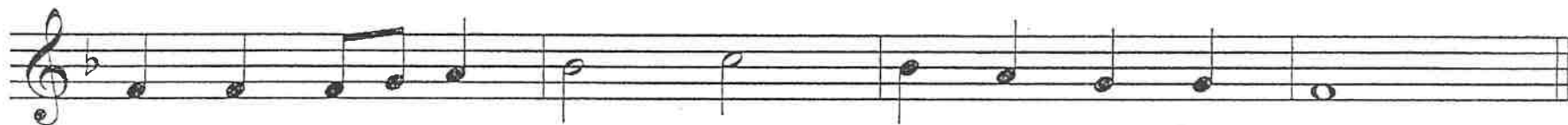


# 2010 North Carolina Middle School Honors Chorus Audition Sight-Reading





# 2013 Middle School Honors Sight Singing



# 2014 NC Middle School Sight Reading



# MIDDLE SCHOOL HONORS SIGHTREADING 2015









# 2018 NCMS Honors Chorus

## Sightreading

The image shows a musical score for sightreading, consisting of two staves: a treble staff (top) and a bass staff (bottom). The music is written in 4/4 time and has a key signature of two flats (B-flat and E-flat). The treble staff begins with a treble clef, a key signature of two flats, and a 4/4 time signature. The melody consists of quarter notes in the first four measures, followed by a half note in the fifth measure, and a whole note in the sixth measure. The bass staff begins with a bass clef, a key signature of two flats, and a 4/4 time signature. The bass line consists of quarter notes in the first four measures, followed by a half note in the fifth measure, and a whole note in the sixth measure. The piece concludes with a double bar line.

