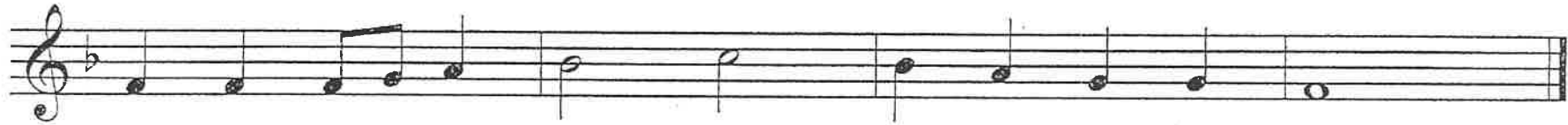


# 2013 Middle School Honors Sight Singing



# 2014 NC Middle School Sight Reading



# MIDDLE SCHOOL HONORS SIGHTREADING 2015



# MIDDLE SCHOOL HONORS SIGHTREADING

2016



# Sight Reading 2017



# 2018 NCMS Honors Chorus

## Sightreading

Musical notation for sightreading exercise, consisting of two staves (treble and bass clef) in 4/4 time, key signature of two flats (Bb and Eb).

The notation shows a sequence of notes across eight measures:

- Measure 1: Treble clef has a quarter note G4, a quarter note A4, and a quarter note B4. Bass clef has a quarter note G2, a quarter note A2, and a quarter note B2.
- Measure 2: Treble clef has a quarter note C5, a quarter note D5, and a quarter note E5. Bass clef has a quarter note C3, a quarter note D3, and a quarter note E3.
- Measure 3: Treble clef has a quarter note F5, a quarter note G5, and a quarter note A5. Bass clef has a quarter note F3, a quarter note G3, and a quarter note A3.
- Measure 4: Treble clef has a quarter note B5, a quarter note C6, and a quarter note D6. Bass clef has a quarter note B3, a quarter note C4, and a quarter note D4.
- Measure 5: Treble clef has a quarter note E6, a quarter note F6, and a quarter note G6. Bass clef has a quarter note E4, a quarter note F4, and a quarter note G4.
- Measure 6: Treble clef has a quarter note A6, a quarter note B6, and a quarter note C7. Bass clef has a quarter note A4, a quarter note B4, and a quarter note C5.
- Measure 7: Treble clef has a quarter note D7, a quarter note E7, and a quarter note F7. Bass clef has a quarter note D5, a quarter note E5, and a quarter note F6.
- Measure 8: Treble clef has a quarter note G7, a quarter note A7, and a quarter note B7. Bass clef has a quarter note G5, a quarter note A5, and a quarter note B6.

# 2019 NCMS Honors Chorus

## Sight Reading

